

ENGINEERING EDUCATION SERIES

REINFORCED CONCRETE CONSTRUCTION

VOLUME III. BRIDGES AND CULVERTS

PREPARED IN THE
EXTENSION DIVISION OF
THE UNIVERSITY OF WISCONSIN

BY

GEORGE A. HOOL, S. B.

*Professor of Structural Engineering
The University of Wisconsin*

WITH CHAPTERS BY

A. W. RANSOME, WM. J. TITUS,
ALBERT M. WOLF, PHILIP AYLETT
AND P. J. MARKMANN

AND ARTICLES BY

A. C. JANNI AND S. W. BOWEN

SECOND EDITION

McGRAW-HILL BOOK COMPANY, INC.

NEW YORK: 370 SEVENTH AVENUE

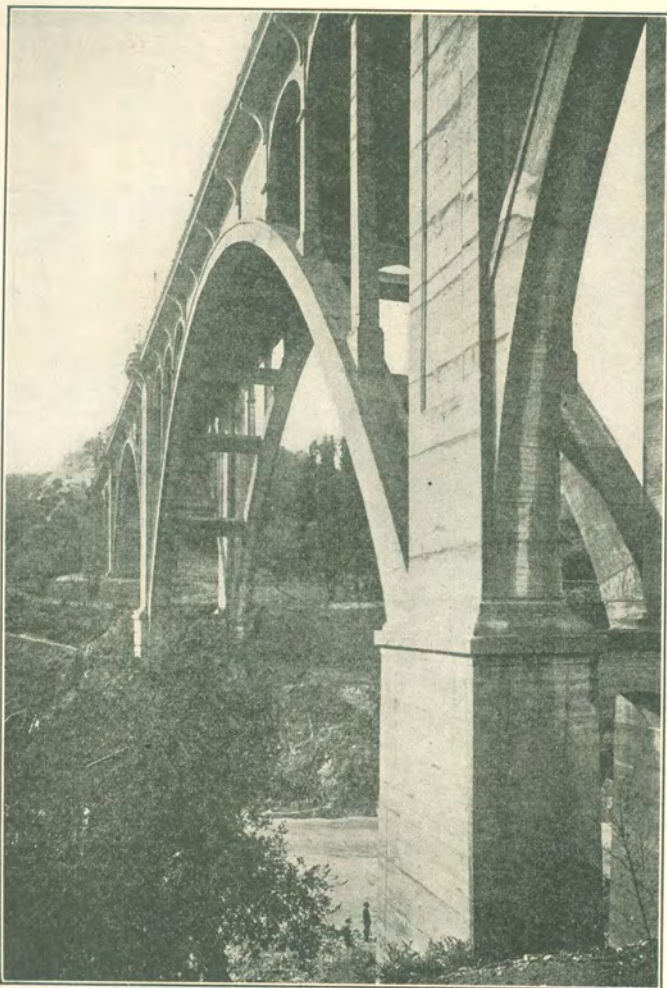
LONDON: 6 & 8 BOUVERIE ST., E. C. 4

1928

COPYRIGHT, 1916, 1928, BY THE
MCGRAW-HILL BOOK COMPANY, INC.

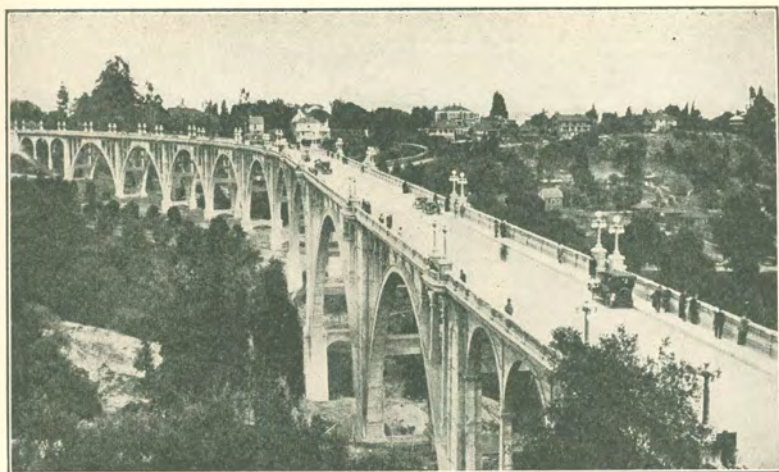
PRINTED IN THE UNITED STATES OF AMERICA

THE MAPLE PRESS COMPANY, YORK, PA.



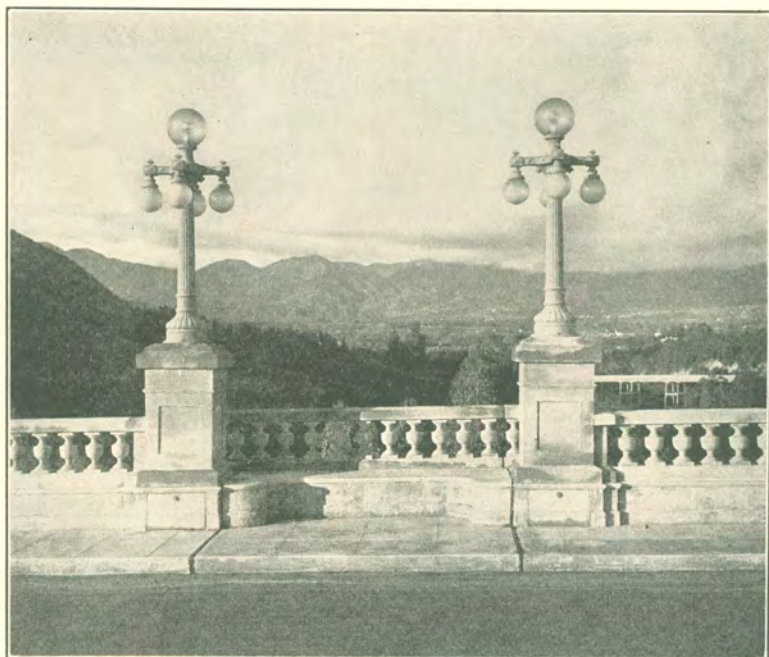
Courtesy of Concrete-Cement Age.

FIG. 229.—Bridge over the Arroyo Seco, Pasadena, Cal.



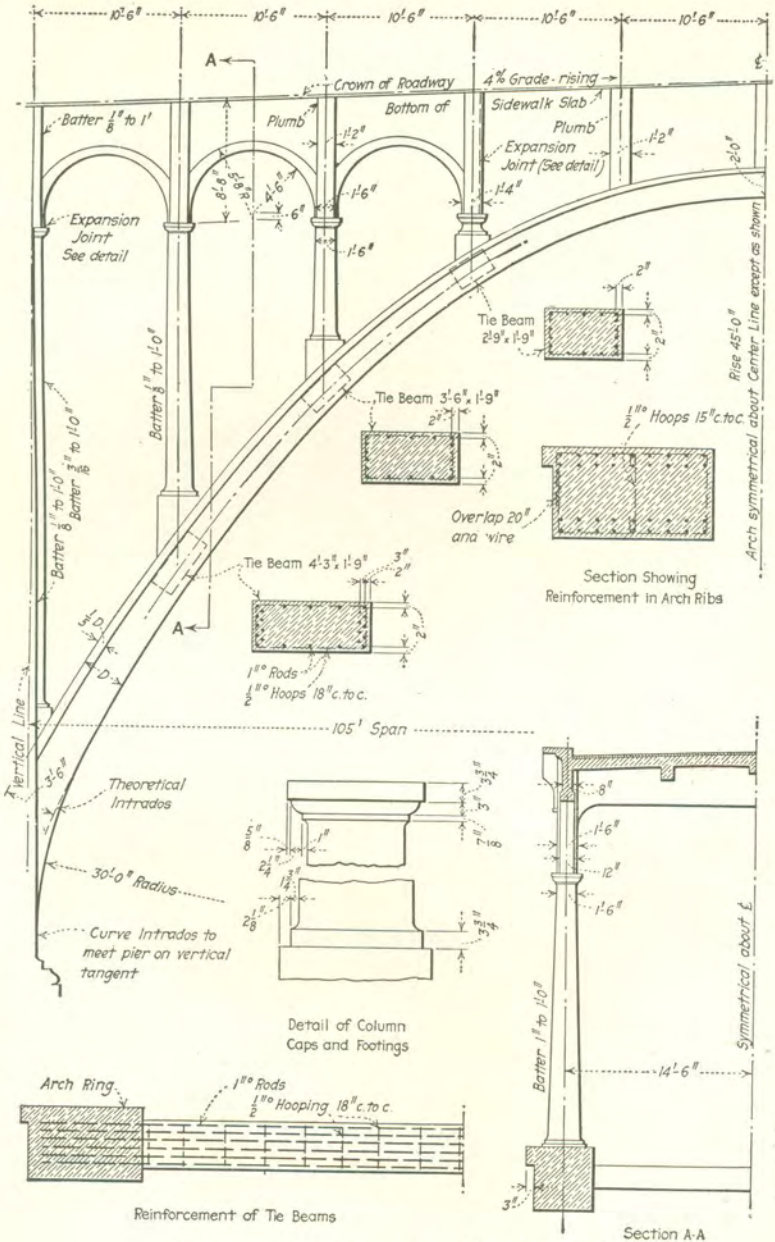
Courtesy of Mr. Charles A. Byers, Los Angeles, Cal.

FIG. 230.—General view of bridge over the Arroyo Seco, Pasadena, Cal.

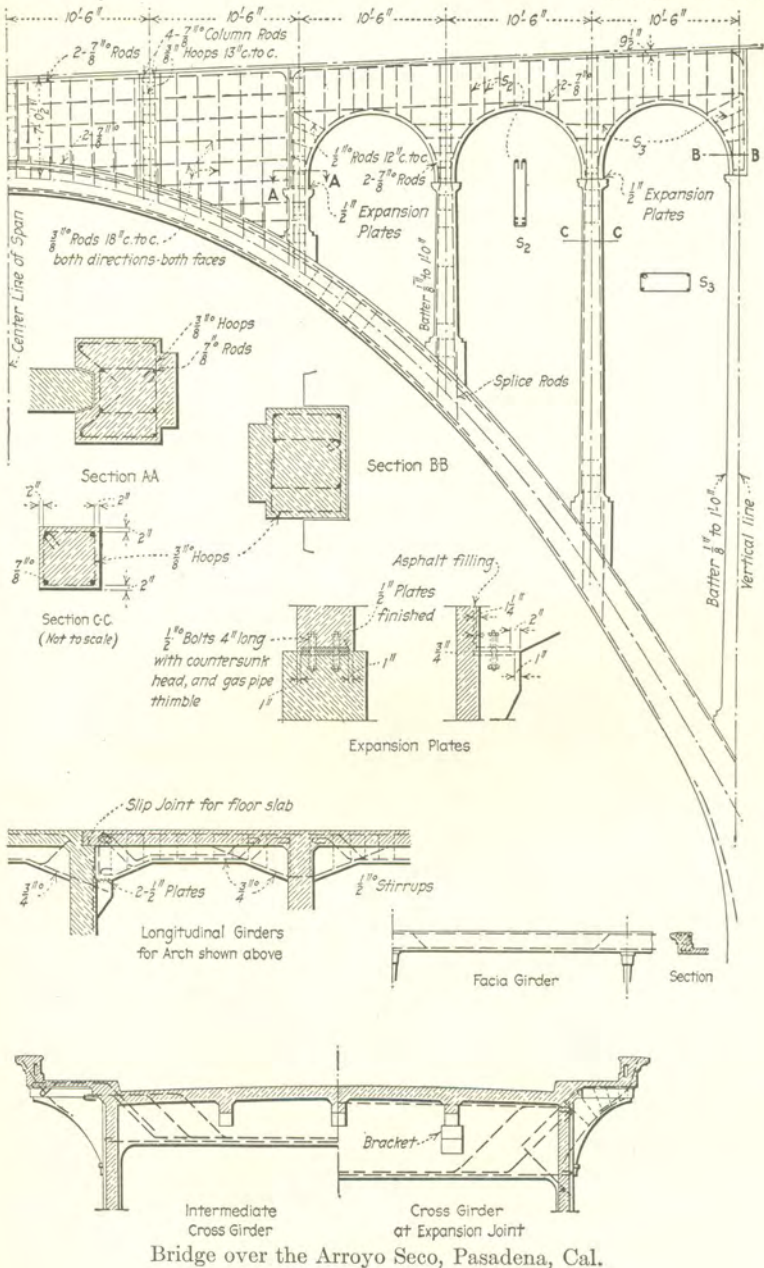


Courtesy of Mr. Charles A. Byers, Los Angeles, Cal.

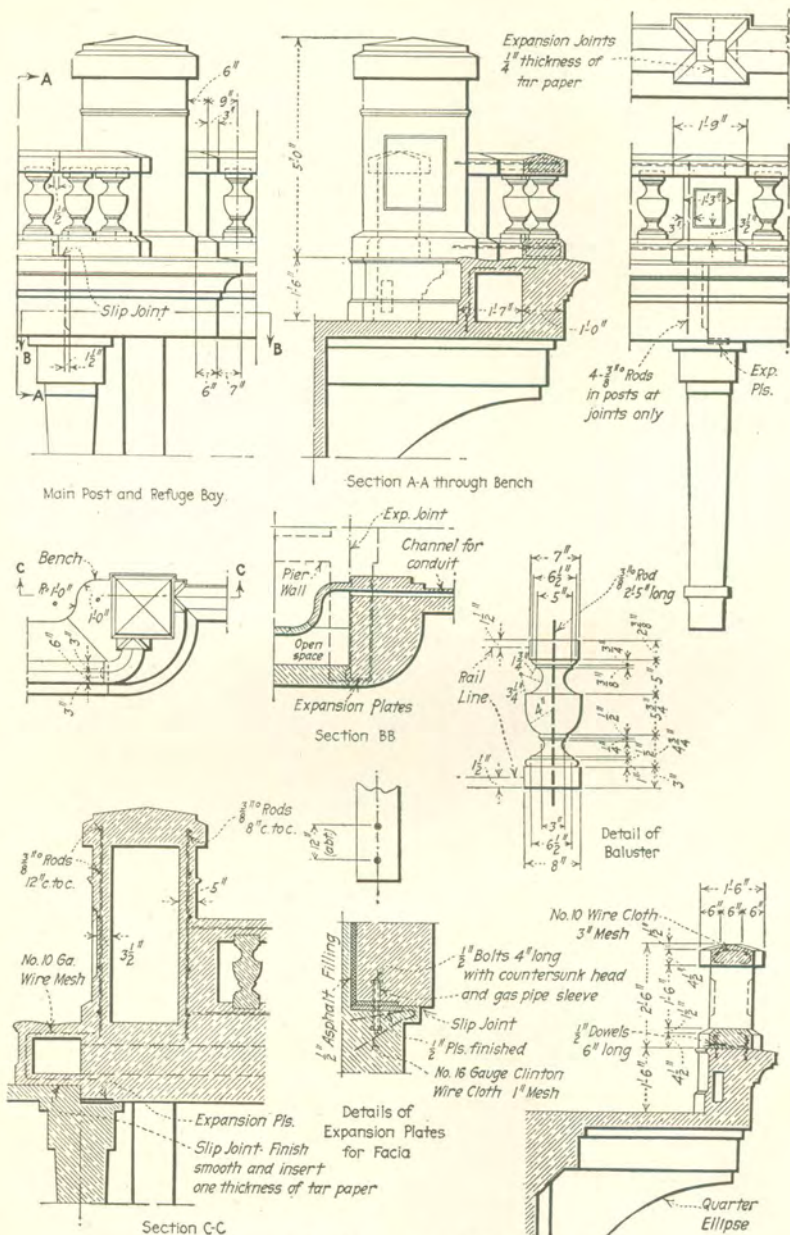
FIG. 231.—Refuge bay on bridge over the Arroyo Seco, Pasadena, Cal.



Bridge over the Arroyo Seco, Pasadena, Cal.



Bridge over the Arroyo Seco, Pasadena, Cal.



Bridge over the Arroyo Seco, Pasadena, Cal.